



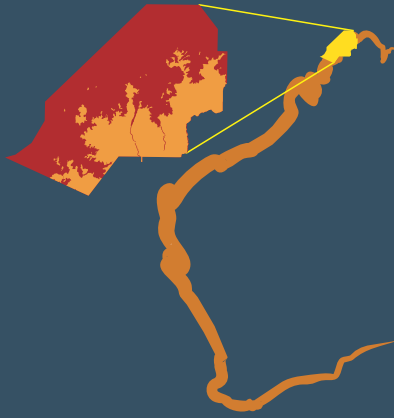
Uunguu Wunambal Gaambera Country

UUNGUU COAST, KIMBERLEY, WESTERN AUSTRALIA



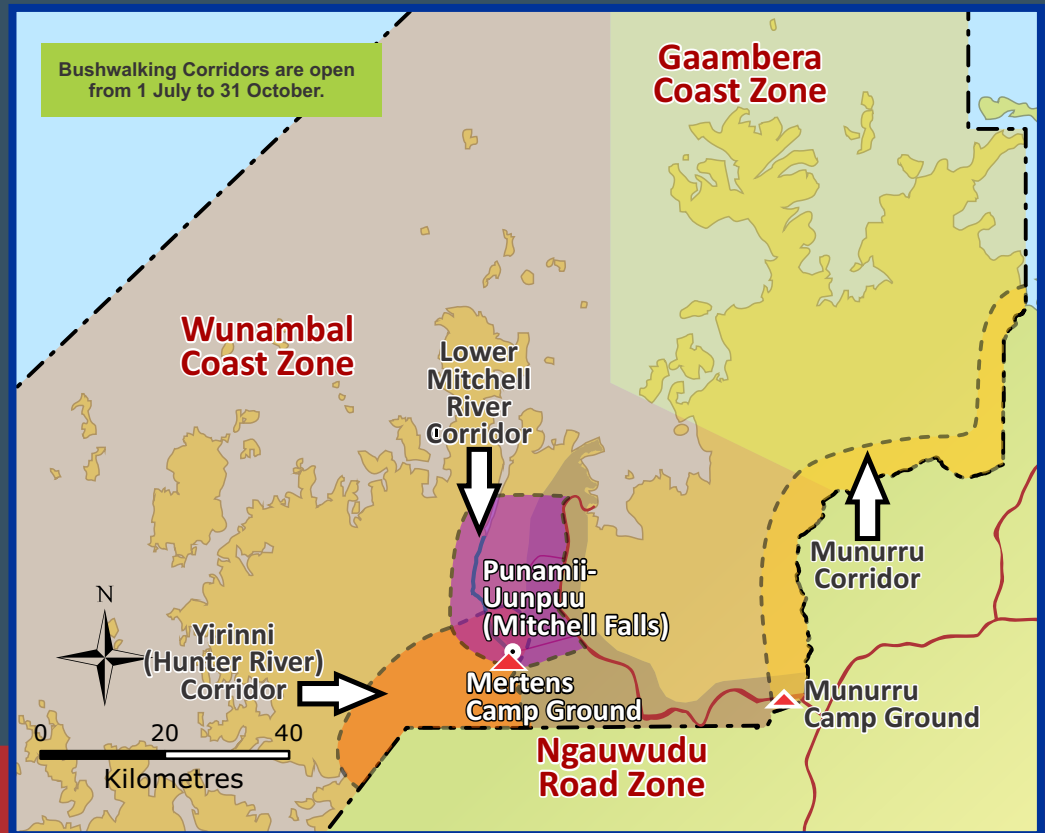
BUSHWALKERS IN THE NORTH KIMBERLEY

You now need our Uunguu Visitor Pass (UVP) to walk in Wunambal Gaambera Country. We have opened three bushwalking corridors: Yirinni (Hunter River), Mitchell River and Munurru, which are open from 1 July to 31 October each year. Bushwalking Corridors are closed during the period 1 November to 30 June due to aerial and on-ground early dry season burning: no Bushwalking UVPs will be issued for this period.



BUSHWALKER TERMS AND CONDITIONS

- You must carry and be able to operate a Personal Locator Beacon (PLB) and/or satellite phone and carry spare batteries.
- For safety reasons, do not walk alone.
- You must possess adequate first-aid knowledge and carry a comprehensive first-aid kit.
- You are advised to obtain adequate insurance in the event of a helicopter rescue.
- If the danger is high or high winds prevail, do not light a campfire.
- If conditions permit a campfire, clear an area of 2 metres around the fire; keep it small; extinguish with water, then bury with sand.
- Never leave a campfire unattended.
- Carry sufficient food and water for your route; no soaps or detergents in watercourses and bury human waste 100m from watercourse.
- Please note there are no marked trails within our approved bushwalking corridors.
- Please register at a Ranger Station before and after your walk.



Buy the "Bushwalker" Uunguu Visitor Pass
for up to 14 days in approved bushwalking corridors
Online: www.wunambalgaambera.org.au



Wunambal Gaambera Aboriginal Corporation

infouv@wunambalgaambera.org.au

